

9200 series

Industrial Mobile Computer



Performance	Operating System	Windows Embedded Handheld 6.5
	CPU	Qualcomm™ 7225-1 528MHz
	Memory	512MB Flash / 256MB DDR SDRAM
	Expansion	micro SD slot with SDHC support (up to 32 GB)
	Operating power	Rechargeable 3.7V 3300 mAh Li-ion battery
	Working hours ¹	12 hours
	Alert	Dual-color LEDs, vibrator, speaker
	Interface supported	16 Pin I / O connector, USB 2.0, RS232
Wireless communication	WWAN ²	GSM / GPRS / EDGE / WCDMA / HSDPA GSM band: 850 / 900 / 1800 / 1900, UMTS band: 850 / 2100
	WLAN	IEEE 802.11 b/g / IEEE 802.11 a/b/g/n (Cisco® CCX v4 certified)
	WLAN security	WEP, WPA (TKIP, AES, PSK), WPA2 (AES, PSK)
	WPAN	Bluetooth® Class II, V2.1 with Enhanced Data Rate (EDR)
	Bluetooth® profile	GAP, SDP, GOEP, SPP, OPP, DUN, A2DP, PAN, HID, HSP, HFP, AOB, AVRCP
	GPS	GPS/ AGPS/ XTRA
Data capture	Barcode scanning	1D Laser/ 1D CCD/ 2D imager
	RFID (read / write)	HF RFID 13.56 MHz frequency Support Tags: ISO14443A (Mifare), ISO14443B, ISO15693
	Camera	3 megapixels CMOS with LED flash and autofocus
Physical characteristics	Display	2.8" QVGA transfective/ transmissive TFT color LCD with LED backlight
	Keypad	23-key Numeric keypad with LED backlight
	Size (L x M x H)	175 x 60 x 34 mm
	Weight (laser including battery)	310 g
User environment	Operating temperature ³	-10°C to 50°C (Transmissive) / -20°C to 50°C (Transfective)
	Storage temperature ³ (w/o battery)	-20°C to 60°C (Transmissive) / -30°C to 70°C (Transfective)
	Humidity (non-condensed)	Operating: 10% ~ 90% Storage: 5% ~ 90%
	Impact resistance	1.5 m multiple drops onto concrete, 5 drops on each side / IP65 / 1000 tumbles at 0.5 m
	Electrostatic discharge	± 15 kV air discharge, ± 8 kV contact discharge
	EMC regulation	RCM, FCC, CE, NCC, SRRC, CCC, MII, RCM, TELEC, JATE
Development support	Cipherlab C++ / .NET, SDK to support Microsoft® Visual studio 2005, Microsoft® Visual Studio 2008	
Application software	App-Lock, Camera Application, Mobile Network Wizard, Mobile Ghost, Button Assignment, GPS Manager, Reader Configuration, Signature Capture, TimeSync, Terminal Emulation, CipherLab SmartShell, CipherLab MIRROR Browser, Kalipso Mobile Application Generator, Naurtech CETerm, SOTI MobiControl, Wavelink Avalanche and Emulators	
Warranty	1 year	

1. Minimum 12 hours under WLAN and laser scanning per 20 seconds, LCD 50% backlight and speaker on (volume is default) at 25°C, RFID off / Bluetooth® off / IEEE 802.11 b/g on. The test is based on one broadcasting packet per second.

2. The mobile computer has received general telecommunication certification for data communication. Please check with your local carrier for the optimum operating efficiency.

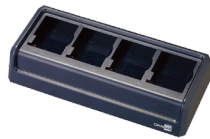
3. Varied by product configuration.



ACCESSORIES



Charging and communication cradle



4-slot battery charger



Snap-on cable (USB / RS232)



Snap-on car charger



HEADQUARTERS
CipherLab Co., Ltd.
 12F, 333 Dunhua S. Rd., Sec.2
 Taipei, Taiwan 10669
Tel +886 2 8647 1166
Fax +886 2 8732 3300
www.cipherlab.com

CipherLab Electronics Trading
(Shanghai) Co., Ltd.
 J Room, 4F, No.728 West Yan'an Rd.
 Changning District, Shanghai
 China 200050
Tel +86 21 3368 0288
Toll Free +86 40 0920 0285
Fax +86 21 3368 0286

CipherLab USA Inc.
 2552 Summit Avenue STE 400
 Plano, Texas USA 75074
Tel +1 469 241 9779
Toll Free 888 300 9779
Fax +1 469 241 0697

CipherLab GmbH
 Gießerallee 21
 47877 Willich
 Germany
Tel +49 2154 89777 20
Fax +49 2154 89777 32