

# MS7600 Horizon

---

## Omnidirectional Laser Scanner

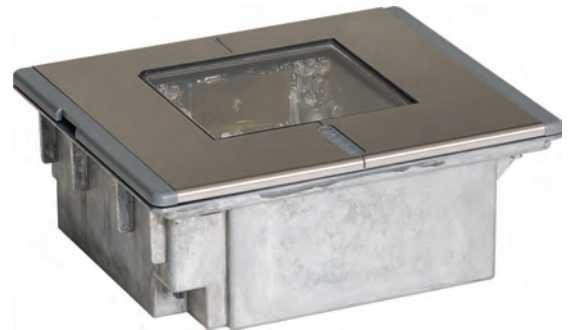
Honeywell's MS7600 Horizon® is a compact in-counter hands-free laser scanner designed with a dense 20-line scan pattern that provides fast, efficient throughput.

Horizon is equipped with an integrated RF EAS deactivation antenna. The EAS security tag, designed to reduce shrink, is deactivated and the bar code is scanned with a single pass. These simultaneous operations help improve operator comfort and increase throughput. To further enhance operator efficiency and productivity, Horizon is equipped with IR laser activation. This allows the user to "wake" the unit from a power save or sleep mode and read a bar code instantaneously.

Each Horizon includes an RS232 auxiliary port that allows for hand-held bar code scanners to be connected providing easy scanning of bulky, oversized objects. Other peripherals such as check readers or magnetic stripe readers can also utilize the flexibility of the auxiliary port. The Horizon also provides multiple interfaces and data parsing making it compatible with almost every POS system on the market today.

The combination of performance, ruggedness, and a myriad of features make the Horizon an ideal choice for grocery, supermarket, retail, package depot, and a multitude of other applications.

For more information on the MS7600 Horizon omnidirectional laser scanner, please visit [www.honeywell.com/aidc](http://www.honeywell.com/aidc)



## Features

---

- **Durable Die-Cast Construction:** Withstands abuse in the harshest environments
- **Flash ROM:** Protects POS investment with free firmware updates via MetroSet®2 software and standard PC
- **Built In RF EAS Antenna:** Increases efficiency by simultaneously deactivating RF EAS tags and decoding bar codes
- **Field Replaceable Window:** Fast repairs without removing unit from service
- **Auxiliary Port:** Connect an external scanner or other peripheral directly to the scanner

# MS7600 Horizon Technical Specifications

## Operational

Light Source	Visible Laser Diode 650 nm ± 10 nm
Visual Indicators	Yellow = ready to scan; Red = good read
Host System Interfaces	USB, RS232, Keyboard Wedge, IBM 46xx (RS485), OCIA, Laser Wand Emulation
Auxiliary Ports	RS232: Secondary Scanner or Scale, EAS

## Mechanical

Dimensions (LxWxH)	88 mm x 229 mm x 193 mm (3.5" x 9.0" x 7.6")
Weight	2.9 kg (6.3 lbs)

## Electrical

Input Voltage	5 VDC ± 0.25 V
Operating Power (typical)	2.6 W (500 mA @ 5 V)
Standby Power (typical)	830 mW (<165 mA @ 5 V)
DC Transformers	Class 2: 5.2 VDC @ 1 A
Laser Class	Class 1: IEC 60825-1, EN60825-1
EMC	FCC Part 15, ICES-003, EN55022 Class A

## Environmental

Operating Temperature	0°C to 40°C (32°F to 104°F)
Storage Temperature	-40°C to 60°C (-40°F to 140°F)
Humidity	5% to 95% relative humidity, non-condensing
Environmental Sealing	Sealed to resist airborne particulate contaminants
Light Levels	4842 Lux (450 foot-candles)

## Scan Performance

Scan Pattern	Omnidirectional: 5 fields of 4 parallel lines
Scan Speed	2000 scan lines per second
Print Contrast	35% minimum reflectance difference
Pitch, Skew	60°, 60°
Decode Capability	Reads standard 1D and GS1 DataBar symbologies. Visit <a href="http://www.honeywell.com/aidc/symbologies">www.honeywell.com/aidc/symbologies</a> for details.



Typical Performance*	
Narrow Width	Depth of Field
5.2 mil	0 mm - 38 mm (0" - 1.5")
7.5 mil	0 mm - 114 mm (0" - 4.5")
10.4 mil	0 mm - 178 mm (0" - 7.0")
13 mil	0 mm - 203 mm (0" - 8.0")
19 mil	0 mm - 229 mm (0" - 9.0")
*Resolution: 5 mil (0.125 mm)	
*Performance may be impacted by bar code quality and environmental conditions	

